



Norwich Western Link

Environmental Statement

Chapter 11: Bats

Appendix 4d: Summer Automated Detector Surveys

Author: WSP UK Limited

Document Reference: 3.11.04d

Version Number: 00

Date: March 2024



Contents

1	Introduction	3
1.1	Summer Automated Detector Surveys	3



1 Introduction

1.1 Summer Automated Detector Surveys

1.1.1 WSP UK Ltd was commissioned by NCC in 2021 to complete a comprehensive suite of bat activity surveys for the Proposed Scheme, including a number of bat activity surveys during winter 2020/2021 and all summer activity surveys (ranging from 2019 to 2021).

1.1.2 Technical appendix 4d presents a table and series of maps, labelled Table D-1 and Figure D-1 to Figure D-13, showing the results of summer automated detector surveys undertaken in 2020 and 2021. The automated detectors were located within habitat features considered likely to be used by commuting or foraging bats within the Site Boundary and and connected habitats at risk of severance from the Proposed Scheme. These locations have been grouped for analysis with detector locations as described in Appendix 11.04a and Figure A-4.

Table D-1

1.1.3 Table D-1 summarises the bat species passes per night during the summer surveys at each location. From left to right, the first column displays the group (A-M). The second column displays the group location. The third column shows the survey location (C1-R7). The fourth column displays the month of each survey. The fifth column displays the number of nights data that was collected at each location. The sixth column displays the broad habitat type present at each location. The seventh column displays the average number of passes for barbastelle from each survey at each location (to two decimal places). The eighth column displays the average number of passes for common pipistrelle from each survey at each location (to two decimal places). The ninth column displays the average number of passes for soprano pipistrelle from each survey at each location (to two decimal places). The tenth column displays the average number of passes for pipistrelle species from each survey at each location (to two decimal places). The eleventh



column displays the average number of passes for *Nathusius pipistrelle* from each survey at each location (to two decimal places). The twelfth column displays the average number of passes for *Myotis* species from each survey at each location (to two decimal places). The thirteenth column displays the average number of passes for *Nyctalus* species from each survey at each location (to two decimal places). The fourteenth column displays the average number of passes for noctule from each survey at each location (to two decimal places). The fifteenth column displays the average number of passes for Leisler's bat from each survey at each location (to two decimal places). The sixteenth column displays the average number of passes for brown long-eared bat from each survey at each location (to two decimal places). The seventeenth column displays the average number of passes for serotine from each survey at each location (to two decimal places). The final column displays the total passes per night (PPN) from each survey at each location (to two decimal places).

Figure D-1

- 1.1.4 Figure D-1 shows a map of the average passes per night for barbastelle at each location reference, across the Site Boundary, with passes recorded within Group A: The River Wensum and Grassland, Group B: The Northern Woodlands, Group C: Grassland between woodlands, Group D: Spring Hills Woodland, Group E: Long Plantation, Group F: Woodland south of Ringland Lane, Group G: Hedgerows north of Weston Road, Group H: Hedgerows south of Weston Road and Group I: The Broadway, Group J: Foxburrow Plantation and Group K: Hedgerows South of Foxburrow Plantation.
- 1.1.5 There were 86 detector locations across 2019, 2020 and 2021 where barbastelle passes were recorded, with the greatest number of passes recorded towards the north area of the Site Boundary including The Northern Woodlands.
- 1.1.6 Figure D-2 Figure D-2 shows a map of the peak monthly activity between May and September, for barbastelle, at each location reference, across the Site Boundary, with peak monthly activity recorded within Group A: The River



Wensum and Grassland, Group B: The Northern Woodlands, Group C: Grassland between woodlands, Group D: Spring Hills Woodland, Group E: Long Plantation, Group F: Woodland south of Ringland Lane, Group G: Hedgerows north of Weston Road, Group H: Hedgerows south of Weston Road and Group I: The Broadway, Group J: Foxburrow Plantation and Group K: Hedgerows South of Foxburrow Plantation.

Figure D-3

1.1.7 Figure D-3 shows a map of the average passes per night for common pipistrelle at each location reference, across the Site Boundary, with passes recorded within Group A: The River Wensum and Grassland, Group B: The Northern Woodlands, Group C: Grassland between woodlands, Group D: Spring Hills Woodland, Group E: Long Plantation, Group F: Woodland south of Ringland Lane, Group G: Hedgerows north of Weston Road, Group H: Hedgerows south of Weston Road and Group I: The Broadway, Group J: Foxburrow Plantation and Group K: Hedgerows South of Foxburrow Plantation.

1.1.8 There were 86 detector locations across 2019, 2020 and 2021 where common pipistrelle passes were recorded, with the greatest number of passes recorded towards the south area of the Site Boundary including The Broadway.

Figure D-4

1.1.9 Figure D-4 shows a map of the peak monthly activity between May and September, for common pipistrelle, at each location reference, across the Site Boundary, with peak monthly activity recorded within Group A: The River Wensum and Grassland, Group B: The Northern Woodlands, Group C: Grassland between woodlands, Group D: Spring Hills Woodland, Group E: Long Plantation, Group F: Woodland south of Ringland Lane, Group G: Hedgerows north of Weston Road, Group H: Hedgerows south of Weston Road and Group I: The Broadway, Group J: Foxburrow Plantation and Group K: Hedgerows South of Foxburrow Plantation.



Figure D-5

1.1.10 Figure D-5 shows a map of the average passes per night for soprano pipistrelle at each location reference, across the Site Boundary, with passes recorded within Group A: The River Wensum and Grassland, Group B: The Northern Woodlands, Group C: Grassland between woodlands, Group D: Spring Hills Woodland, Group E: Long Plantation, Group F: Woodland south of Ringland Lane, Group G: Hedgerows north of Weston Road, Group H: Hedgerows south of Weston Road and Group I: The Broadway, Group J: Foxburrow Plantation and Group K: Hedgerows South of Foxburrow Plantation.

1.1.11 There were 49 detector locations across 2019, 2020 and 2021 where soprano pipistrelle passes were recorded, with the greatest number of passes recorded towards the south area of the Site Boundary including The Broadway.

Figure D-6

1.1.12 Figure D-6 shows a map of the peak monthly activity between May and September, for soprano pipistrelle, at each location reference, across the Site Boundary, with peak monthly activity recorded within Group A: The River Wensum and Grassland, Group B: The Northern Woodlands, Group C: Grassland between woodlands, Group D: Spring Hills Woodland, Group E: Long Plantation, Group F: Woodland south of Ringland Lane, Group G: Hedgerows north of Weston Road, Group H: Hedgerows south of Weston Road and Group I: The Broadway, Group J: Foxburrow Plantation and Group K: Hedgerows South of Foxburrow Plantation.

Figure D-7

1.1.13 Figure D-7 shows a map of the average passes per night for Nathusius' pipistrelle at each location reference, across the Site Boundary, with passes recorded within Group A: The River Wensum and Grassland, Group B: The Northern Woodlands, Group C: Grassland between woodlands, Group D: Spring Hills Woodland, Group E: Long Plantation, Group F: Woodland south



of Ringland Lane, Group G: Hedgerows north of Weston Road, Group H: Hedgerows south of Weston Road and Group I: The Broadway, Group J: Foxburrow Plantation and Group K: Hedgerows South of Foxburrow Plantation. 1.1.10 There were 75 detector locations across 2019, 2020 and 2021 where Nathusius' pipistrelle passes were recorded, with the greatest number of passes recorded towards the south area of the Site Boundary including The Broadway.

Figure D-8

1.1.14 Figure D-8 shows a map of the average passes per night for *Myotis* species at each location reference, across the Site Boundary, with passes recorded within Group A: The River Wensum and Grassland, Group B: The Northern Woodlands, Group C: Grassland between woodlands, Group D: Spring Hills Woodland, Group E: Long Plantation, Group F: Woodland south of Ringland Lane, Group G: Hedgerows north of Weston Road, Group H: Hedgerows south of Weston Road and Group I: The Broadway, Group J: Foxburrow Plantation and Group K: Hedgerows South of Foxburrow Plantation.

1.1.15 There were 86 detector locations across 2019, 2020 and 2021 where *Myotis* species passes were recorded, with the greatest number of passes recorded towards the north area of the Site Boundary including The Northern Woodlands.

Figure D-9

1.1.16 Figure D-9 shows a map of the peak monthly activity between May and September, for *Myotis* species, at each location reference, across the Site Boundary, with peak monthly activity recorded within Group A: The River Wensum and Grassland, Group B: The Northern Woodlands, Group C: Grassland between woodlands, Group D: Spring Hills Woodland, Group E: Long Plantation, Group F: Woodland south of Ringland Lane, Group G: Hedgerows north of Weston Road, Group H: Hedgerows south of Weston Road and Group I: The Broadway, Group J: Foxburrow Plantation and Group K: Hedgerows South of Foxburrow Plantation.



Figure D-10

1.1.17 Figure D-10 shows a map of the average passes per night for *Nyctalus* species at each location reference, across the Site Boundary, with passes recorded within Group A: The River Wensum and Grassland, Group B: The Northern Woodlands, Group C: Grassland between woodlands, Group D: Spring Hills Woodland, Group E: Long Plantation, Group F: Woodland south of Ringland Lane, Group G: Hedgerows north of Weston Road, Group H: Hedgerows south of Weston Road and Group I: The Broadway, Group J: Foxburrow Plantation and Group K: Hedgerows South of Foxburrow Plantation.

1.1.18 There were 85 detector locations across 2019, 2020 and 2021 where *Nyctalus* species passes were recorded, with the greatest number of passes recorded towards the south area of the Site Boundary including The Broadway.

Figure D-11

1.1.19 Figure D-11 shows a map of the average passes per night for brown long-eared bat at each location reference, across the Site Boundary, with passes recorded within Group A: The River Wensum and Grassland, Group B: The Northern Woodlands, Group C: Grassland between woodlands, Group D: Spring Hills Woodland, Group E: Long Plantation, Group F: Woodland south of Ringland Lane, Group G: Hedgerows north of Weston Road, Group H: Hedgerows south of Weston Road and Group I: The Broadway, Group J: Foxburrow Plantation and Group K: Hedgerows South of Foxburrow Plantation.

1.1.20 There were 86 detector locations across 2019, 2020 and 2021 where brown long-eared bat passes were recorded, with the greatest number of passes recorded towards the north area of the Site Boundary including The Northern Woodlands.



Figure D-12

1.1.21 Figure D-12 shows a map of the peak monthly activity between May and September, for brown long-eared bat, at each location reference, across the Site Boundary, with peak monthly activity recorded within Group A: The River Wensum and Grassland, Group B: The Northern Woodlands, Group C: Grassland between woodlands, Group D: Spring Hills Woodland, Group E: Long Plantation, Group F: Woodland south of Ringland Lane, Group G: Hedgerows north of Weston Road, Group H: Hedgerows south of Weston Road and Group I: The Broadway, Group J: Foxburrow Plantation and Group K: Hedgerows South of Foxburrow Plantation.

Figure D-13

1.1.22 Figure D-13 shows a map of the average passes per night for serotine at each location reference, across the Site Boundary, with passes recorded within Group A: The River Wensum and Grassland, Group B: The Northern Woodlands, Group C: Grassland between woodlands, Group D: Spring Hills Woodland, Group E: Long Plantation, Group F: Woodland south of Ringland Lane, Group G: Hedgerows north of Weston Road, Group H: Hedgerows south of Weston Road and Group I: The Broadway, Group J: Foxburrow Plantation and Group K: Hedgerows South of Foxburrow Plantation.

1.1.23 There were 85 detector locations across 2019, 2020 and 2021 where serotine passes were recorded, with the greatest number of passes recorded towards the south area of the Site Boundary including The Broadway.

1.1.24 We have included a summary of key information shown in this document in an accessible format. However, some users may not be able to access all technical details. If you require this document in a more accessible format, please contact norwichwesternlink@norfolk.gov.uk

Appendix D

Summer Automated Detector Survey





Table D-1 - Summary of bat species passes per night during the winter surveys at each location

Group	Group Location	Location	Month	No. Nights	Broad Habitat type	Barbastelle	Common pipistrelle	Soprano pipistrelle	Pipistrelle sp.	Nathusius pipistrelle	Myotis sp.	Nyctalus sp.	Noctule	Leisler's	Brown long-eared bat	Serotine	Total PPN
A	River Wensum and Grassland	C1	May	5	River	6.00	191.40	973.60	1.00	0.00	85.40	2.00	14.40	0.00	1.00	1.00	1275.80
A	River Wensum and Grassland	C1	June	5	River	0.00	42.00	48.20	0.00	0.20	2.80	0.20	29.00	0.00	2.20	0.00	124.60
A	River Wensum and Grassland	C1	July	5	River	0.00	54.00	95.60	0.00	0.60	4.60	0.00	20.20	1.00	1.40	0.60	178.00
A	River Wensum and Grassland	C1	August	5	River	1.80	91.40	1352.60	0.20	0.20	64.40	2.80	8.40	0.00	1.20	0.80	1523.80
A	River Wensum and Grassland	C1	September	5	River	0.20	8.40	119.60	0.20	0.00	6.40	0.60	3.00	0.00	1.40	0.00	139.80
A	River Wensum and Grassland	C39	May	5	Grassland	0.80	13.40	20.80	0.40	0.00	2.00	1.40	3.00	0.00	0.00	0.00	41.80
A	River Wensum and Grassland	C39	June	5	Grassland	1.20	10.40	22.00	0.60	0.00	0.80	0.00	9.00	0.40	0.20	0.00	44.60
A	River Wensum and Grassland	C39	July	5	Grassland	0.40	19.00	45.60	4.80	0.00	2.80	0.60	10.20	0.00	0.60	0.60	84.60



A	River Wensum and Grassland	C39	August	5	Grassland	2.80	13.20	21.80	0.20	0.00	3.00	0.60	0.40	0.00	2.20	0.20	44.40
A	River Wensum and Grassland	C39	September	5	Grassland	2.80	42.20	27.00	0.00	0.00	2.00	0.60	1.00	0.00	1.40	0.00	77.00
A	River Wensum and Grassland	D1	May	5	Grassland	0.20	39.80	41.20	0.00	0.00	4.20	1.00	0.60	0.00	1.00	0.00	88.00
A	River Wensum and Grassland	D1	June	5	Grassland	1.00	12.60	126.20	0.00	0.60	4.60	0.60	13.80	0.00	1.00	0.80	161.20
A	River Wensum and Grassland	D1	July	5	Grassland	2.20	13.00	26.00	0.00	0.00	3.20	0.40	4.00	0.00	3.60	0.00	52.40
A	River Wensum and Grassland	D1	August	5	Grassland	1.00	8.80	80.80	0.00	0.00	6.00	1.60	2.40	0.00	2.40	1.20	104.20
A	River Wensum and Grassland	D1	September	5	Grassland	5.20	13.40	210.60	3.80	0.20	14.00	0.60	0.20	0.00	10.20	0.40	258.60
A	River Wensum and Grassland	M43	June	5	Grassland	1.00	23.00	4.40	0.40	0.00	2.20	0.00	4.20	0.00	4.40	0.40	40.00
A	River Wensum and Grassland	M43	July	5	Grassland	2.60	38.20	15.60	5.80	0.00	10.80	2.80	5.60	0.00	7.00	1.00	89.40
A	River Wensum and Grassland	M43	August	5	Grassland	7.60	76.60	61.20	0.20	0.00	6.80	7.20	11.80	0.00	12.80	1.40	185.60



A	River Wensum and Grassland	M43	September	5	Grassland	14.00	130.40	45.60	3.60	0.40	13.00	4.00	4.40	0.00	38.60	0.80	254.80
B	Northern Woodlands	C4	May	5	Woodland	1.60	5.60	23.40	0.00	0.20	2.00	0.00	0.00	0.20	0.00	0.00	33.00
B	Northern Woodlands	C4	June	5	Woodland	4.40	19.00	44.80	0.00	1.40	2.00	0.40	8.20	0.00	1.60	0.20	82.00
B	Northern Woodlands	C4	July	5	Woodland	4.20	38.40	29.40	0.00	1.20	3.80	1.80	13.40	4.40	2.80	1.20	100.60
B	Northern Woodlands	C4	September	5	Woodland	7.40	168.00	40.80	0.00	0.00	3.80	3.40	3.60	0.00	3.60	0.00	230.60
B	Northern Woodlands	C37	May	5	Woodland	0.60	26.80	46.60	1.20	0.00	9.40	0.20	0.20	0.00	0.00	0.00	85.00
B	Northern Woodlands	C37	June	5	Woodland	3.80	78.00	268.60	0.40	0.00	21.20	0.00	5.80	0.00	0.60	2.60	381.00
B	Northern Woodlands	C37	July	5	Woodland	8.00	177.40	107.00	0.00	0.00	22.00	0.60	1.40	0.00	6.40	0.00	322.80
B	Northern Woodlands	C37	August	5	Woodland	6.20	40.00	255.20	0.00	0.00	8.20	0.40	2.00	0.00	5.60	3.00	320.60
B	Northern Woodlands	C37	September	5	Woodland	2.60	40.00	169.20	0.00	0.00	4.40	0.20	0.60	0.00	7.60	0.20	224.80



B	Northern Woodlands	C38	May	5	Woodland	1.60	196.80	157.20	0.00	0.00	3.40	0.00	0.20	0.00	0.00	0.20	359.40
B	Northern Woodlands	C38	June	5	Woodland	24.80	197.60	367.80	0.00	0.00	38.00	3.20	9.00	0.00	2.00	1.40	643.80
B	Northern Woodlands	C38	July	5	Woodland	50.40	755.40	720.20	0.00	0.00	9.20	1.00	0.80	0.00	0.60	1.00	1538.60
B	Northern Woodlands	C38	August	5	Woodland	82.00	281.80	570.80	0.00	0.00	7.00	0.80	1.20	0.00	6.20	1.20	951.00
B	Northern Woodlands	C38	September	5	Woodland	138.60	497.60	732.80	0.00	0.20	12.60	2.60	2.00	0.00	4.00	1.00	1391.40
B	Northern Woodlands	C48	August	5	Woodland	6.80	50.00	131.20	0.00	0.20	5.20	0.00	10.80	1.60	9.00	1.80	216.60
B	Northern Woodlands	C48	September	5	Woodland	9.60	119.80	57.40	0.20	2.80	3.80	1.40	7.20	0.00	6.20	0.60	209.00
B	Northern Woodlands	C49	May	5	Woodland	0.80	105.40	148.00	0.00	0.00	5.60	0.60	2.20	0.00	1.00	0.00	263.60
B	Northern Woodlands	C49	June	5	Woodland	13.60	214.20	116.60	0.20	0.60	23.40	12.40	42.60	0.00	4.20	2.40	430.20
B	Northern Woodlands	C49	July	5	Woodland	12.40	187.40	115.20	1.40	0.00	13.80	2.80	11.40	0.00	2.00	2.20	348.60



B	Northern Woodlands	C49	August	5	Woodland	20.0 0	27.60	115.4 0	0.00	0.00	8.2 0	0.2 0	1.4 0	0.0 0	2.40	0.40	175.6 0
B	Northern Woodlands	C49	September	5	Woodland	20.8 0	158.8 0	102.6 0	1.60	0.20	11.40	2.2 0	2.0 0	0.0 0	2.60	0.00	302.2 0
B	Northern Woodlands	C57	May	5	Woodland	0.00	12.60	5.20	0.00	0.00	3.0 0	0.0 0	0.0 0	0.0 0	0.00	0.00	20.80
B	Northern Woodlands	C57	June	5	Woodland	0.40	20.60	6.80	0.20	0.00	13.80	0.0 0	1.4 0	0.0 0	2.80	0.40	46.40
B	Northern Woodlands	C57	July	5	Woodland	34.8 0	64.40	32.20	1.20	0.00	13.20	6.4 0	12.20	0.0 0	13.6 0	1.60	179.6 0
B	Northern Woodlands	C57	August	5	Woodland	11.4 0	53.20	55.20	0.00	0.00	8.6 0	4.8 0	15.80	0.2 0	18.4 0	2.60	170.2 0
B	Northern Woodlands	C57	September	5	Woodland	17.4 0	125.8 0	69.40	0.00	2.00	9.4 0	1.8 0	3.6 0	0.0 0	23.2 0	0.20	252.8 0
B	Northern Woodlands	C58	May	5	Woodland	3.40	99.20	31.40	0.00	0.00	5.2 0	1.2 0	0.0 0	0.0 0	0.40	0.20	141.0 0
B	Northern Woodlands	C58	June	5	Woodland	20.6 0	97.20	131.2 0	1.40	0.20	7.2 0	8.0 0	11.60	0.0 0	16.0 0	1.60	295.0 0
B	Northern Woodlands	C58	July	5	Woodland	11.6 0	159.2 0	133.0 0	3.00	0.00	5.6 0	0.4 0	2.6 0	0.0 0	1.00	1.00	317.4 0



B	Northern Woodlands	C58	August	5	Woodland	25.6 0	219.0 0	333.2 0	0.00	0.00	4.8 0	1.4 0	3.2 0	0.0 0	1.20	1.00	589.4 0
B	Northern Woodlands	C58	September	5	Woodland	63.2 0	125.2 0	439.8 0	24.0 0	0.00	6.4 0	1.0 0	1.6 0	0.0 0	2.60	0.20	664.0 0
B	Northern Woodlands	C60	May	5	Woodland	13.6 0	815.6 0	84.80	0.00	21.40	3.0 0	0.8 0	11.20	0.6 0	1.80	1.40	954.2 0
B	Northern Woodlands	C60	June	5	Woodland	9.40	137.4 0	108.8 0	0.00	6.00	1.8 0	0.0 0	4.2 0	0.6 0	1.00	1.20	270.4 0
B	Northern Woodlands	C60	July	10	Woodland	5.00	313.1 0	237.7 0	0.40	0.20	2.2 0	0.7 0	1.7 0	0.2 0	0.20	1.10	562.5 0
B	Northern Woodlands	C60	August	10	Woodland	13.0 0	45.10	215.5 0	0.90	0.00	1.8 0	0.7 0	8.6 0	0.2 0	1.60	3.20	290.6 0
B	Northern Woodlands	C60	September	10	Woodland	30.6 0	61.90	145.1 0	0.00	0.10	2.0 0	0.5 0	3.0 0	0.0 0	1.80	0.50	245.5 0
B	Northern Woodlands	C61	May	5	Woodland	0.40	64.80	137.8 0	3.00	0.20	5.4 0	0.0 0	0.0 0	0.0 0	0.00	0.20	211.8 0
B	Northern Woodlands	C61	June	5	Woodland	7.00	108.8 0	399.6 0	0.80	0.00	18.20	4.6 0	1.6 0	0.0 0	1.20	1.60	543.4 0
B	Northern Woodlands	C61	July	5	Woodland	20.0 0	218.2 0	757.4 0	2.40	0.00	14.40	0.8 0	0.4 0	0.0 0	2.60	0.80	1017.00



B	Northern Woodlands	C61	August	5	Woodland	26.60	269.60	792.00	0.40	0.00	18.60	0.00	0.20	0.00	2.00	1.00	1110.40
B	Northern Woodlands	C61	September	5	Woodland	16.80	35.20	640.00	1.20	0.00	67.20	0.20	0.00	0.00	1.20	1.20	763.00
C	Grassland between Woodlands	M47	May	5	Grassland	0.00	2.40	1.80	0.00	0.00	1.80	0.00	0.00	0.00	0.00	0.00	6.00
C	Grassland between Woodlands	M47	June	5	Grassland	0.00	8.40	2.40	0.00	0.00	3.00	3.60	11.20	0.00	1.60	0.00	30.20
C	Grassland between Woodlands	M47	July	5	Grassland	0.40	19.00	12.20	4.80	0.80	3.00	0.80	9.60	0.00	5.80	0.00	56.40
C	Grassland between Woodlands	M47	August	5	Grassland	1.40	40.60	30.80	0.00	1.00	3.60	0.20	15.80	0.00	5.20	3.00	101.60
C	Grassland between Woodlands	M47	September	5	Grassland	0.60	6.20	3.40	0.60	0.00	8.40	3.80	3.40	0.00	10.00	0.00	36.40
C	Grassland between Woodlands	M46	July	5	Grassland	1.20	54.40	18.00	3.00	1.40	2.60	4.60	9.40	0.00	7.20	0.60	102.40
C	Grassland between Woodlands	M46	August	5	Grassland	7.60	51.40	75.60	0.00	0.00	5.20	6.60	7.00	0.00	17.80	0.80	172.00
C	Grassland between Woodlands	M46	September	5	Grassland	6.80	34.40	13.40	0.00	1.20	8.60	3.20	5.00	0.00	17.00	0.40	90.00



C	Grassland between Woodlands	M50	July	5	Grassland	3.20	16.00	10.40	1.40	1.60	10.80	6.80	13.20	0.00	7.80	0.40	71.60
C	Grassland between Woodlands	M50	August	5	Grassland	9.20	23.20	29.00	0.20	0.00	11.00	9.20	11.60	0.60	25.80	2.40	122.20
C	Grassland between Woodlands	M50	September	5	Grassland	5.80	21.60	17.80	0.00	0.00	14.40	5.20	2.40	0.00	11.60	0.40	79.20
C	Grassland between Woodlands	M51	July	5	Grassland	9.60	96.00	43.00	4.60	0.00	17.60	7.80	9.20	0.00	9.60	1.00	198.40
C	Grassland between Woodlands	M51	August	5	Grassland	26.60	97.40	76.80	0.00	0.00	9.00	11.00	8.60	0.00	24.40	2.40	256.20
C	Grassland between Woodlands	M51	September	5	Grassland	20.60	74.00	79.00	4.00	0.00	16.40	2.20	5.00	0.00	22.20	0.80	224.20
C	Grassland between Woodlands	M52	July	5	Grassland	2.40	24.60	17.00	4.80	0.80	12.60	6.20	16.20	0.00	18.40	0.00	103.00
C	Grassland between Woodlands	M52	August	5	Grassland	6.40	40.40	33.80	0.00	1.00	9.00	10.60	11.00	0.00	24.60	1.60	138.40
C	Grassland between Woodlands	M52	September	5	Grassland	3.40	9.20	9.40	3.20	0.20	4.80	2.40	2.60	0.00	7.60	0.20	43.00
D	Spring Hills Woodland	C5	May	5	Woodland	0.40	2.80	1.20	0.00	0.00	4.20	0.00	0.40	0.00	0.60	0.20	9.80



D	Spring Hills Woodland	C5	June	5	Woodland	2.20	42.40	47.20	0.00	1.20	3.60	0.00	6.80	0.00	0.40	0.00	103.80
D	Spring Hills Woodland	C5	July	5	Woodland	4.80	17.20	26.20	0.00	1.00	10.20	1.00	15.40	1.60	3.80	1.20	82.40
D	Spring Hills Woodland	C5	August	5	Woodland	9.40	23.00	20.00	0.00	0.60	3.60	0.00	9.00	0.00	4.00	1.20	70.80
D	Spring Hills Woodland	C5	September	4	Woodland	7.00	93.00	71.50	0.00	0.00	5.75	4.00	7.25	0.00	5.75	1.00	195.25
D	Spring Hills Woodland	C6	May	5	Woodland	1.60	126.00	73.00	0.00	2.80	8.60	0.00	3.40	0.40	0.80	1.40	218.00
D	Spring Hills Woodland	C6	June	5	Woodland	0.00	29.20	23.20	0.60	0.80	0.20	0.60	5.20	0.00	0.00	0.60	60.40
D	Spring Hills Woodland	C6	July	5	Woodland	6.80	53.40	38.60	0.00	0.00	2.60	0.00	3.80	0.00	0.80	0.20	106.20
D	Spring Hills Woodland	C6	August	5	Woodland	16.20	226.00	297.20	0.00	2.20	18.80	6.00	7.20	0.00	3.40	10.20	587.20
D	Spring Hills Woodland	C6	September	5	Woodland	23.40	255.80	193.80	1.80	0.20	1.60	2.40	1.40	0.00	7.80	1.20	489.40
D	Spring Hills Woodland	C44	May	5	Woodland	0.00	34.40	10.40	0.00	0.00	6.40	0.00	0.00	0.00	0.20	0.00	51.40



D	Spring Hills Woodland	C44	June	5	Woodland	1.60	42.00	6.40	0.00	0.60	1.40	0.20	12.00	0.00	1.60	0.60	66.40
D	Spring Hills Woodland	C44	July	5	Woodland	2.60	333.20	177.40	0.80	0.00	2.40	0.80	9.20	0.00	1.40	0.40	528.20
D	Spring Hills Woodland	C44	August	5	Woodland	2.20	14.80	49.20	0.00	0.00	1.00	0.00	0.80	0.00	0.00	0.00	68.00
D	Spring Hills Woodland	C44	September	5	Woodland	24.60	161.40	108.00	0.00	1.20	15.60	6.20	1.80	0.00	23.00	0.00	341.80
D	Spring Hills Woodland	C45	May	5	Woodland	0.40	5.40	3.80	0.00	0.00	3.40	0.00	0.40	0.00	0.00	0.00	13.40
D	Spring Hills Woodland	C45	June	5	Woodland	9.40	52.40	40.20	0.00	0.60	7.00	6.20	19.60	0.00	3.60	1.60	140.60
D	Spring Hills Woodland	C45	July	5	Woodland	18.60	28.60	42.00	2.00	0.40	3.60	1.80	1.40	0.00	2.80	1.00	102.20
D	Spring Hills Woodland	C45	August	5	Woodland	70.20	34.60	79.40	0.00	0.00	2.60	0.80	2.40	0.00	1.80	0.00	191.80
D	Spring Hills Woodland	C45	September	5	Woodland	14.80	109.00	83.00	0.00	0.20	1.80	1.60	3.00	0.00	7.00	0.60	221.00
D	Spring Hills Woodland	C52	May	5	Woodland	0.40	66.60	89.40	1.20	0.00	0.80	0.00	0.00	0.00	0.00	0.00	158.40



D	Spring Hills Woodland	C52	June	5	Woodland	3.40	757.20	698.60	0.00	0.20	8.60	0.00	0.80	0.00	0.80	0.80	1470.40
D	Spring Hills Woodland	C52	July	5	Woodland	2.00	552.00	441.80	0.40	0.00	6.80	1.20	0.20	0.00	1.40	3.00	1008.80
D	Spring Hills Woodland	C52	August	5	Woodland	4.40	258.40	678.60	32.20	0.00	9.40	1.00	1.40	0.00	2.20	10.00	997.60
D	Spring Hills Woodland	C52	September	5	Woodland	2.20	276.80	553.60	0.80	0.00	6.40	0.00	0.00	0.00	9.20	1.80	850.80
E	Long Plantation	C7	May	5	Woodland	1.40	13.40	3.80	0.00	0.20	8.60	0.00	0.00	0.00	1.40	0.00	28.80
E	Long Plantation	C7	June	5	Woodland	4.00	51.40	61.20	0.00	0.00	0.60	0.00	2.00	0.00	0.20	0.00	119.40
E	Long Plantation	C7	July	5	Woodland	1.60	46.00	11.80	0.00	8.60	1.60	2.40	6.00	13.60	0.60	8.20	100.40
E	Long Plantation	C7	August	5	Woodland	53.40	882.60	225.20	0.00	0.40	28.20	10.60	4.40	0.00	11.80	8.60	1225.20
E	Long Plantation	C7	September	5	Woodland	2.80	244.20	68.80	0.00	1.80	1.40	0.60	7.60	0.00	0.80	0.00	328.00
E	Long Plantation	C8	May	5	Woodland	1.40	6.40	1.80	0.00	0.00	4.80	0.00	0.00	0.00	0.20	0.00	14.60



E	Long Plantation	C8	June	4	Woodland	0.00	15.00	24.25	0.00	1.25	0.25	0.00	1.00	0.00	0.00	0.00	41.75
E	Long Plantation	C8	July	5	Woodland	0.20	59.40	20.80	0.00	0.20	0.60	0.00	2.00	0.60	0.20	0.20	84.20
E	Long Plantation	C8	August	5	Woodland	106.80	78.40	13.00	0.00	0.20	1.60	0.20	1.20	0.40	0.80	0.40	203.00
E	Long Plantation	C8	September	5	Woodland	7.00	134.60	33.80	0.00	0.20	0.80	0.00	0.80	0.00	0.80	0.00	178.00
E	Long Plantation	C53	May	5	Woodland	0.20	90.80	8.60	0.00	0.00	2.60	0.00	0.00	0.00	0.00	0.00	102.20
E	Long Plantation	C53	June	5	Woodland	1.40	618.40	41.80	0.00	0.00	2.20	0.00	3.00	0.00	4.20	0.60	671.60
E	Long Plantation	C53	July	5	Woodland	11.80	715.40	21.00	0.20	0.00	0.80	0.20	0.80	0.00	0.20	0.20	750.60
E	Long Plantation	C53	August	5	Woodland	16.40	1009.00	87.20	0.20	0.00	3.80	0.60	1.40	0.00	0.60	1.20	1120.40
E	Long Plantation	C53	September	5	Woodland	10.40	2406.00	648.00	0.80	0.00	9.20	0.00	0.40	0.00	1.20	0.80	3076.80
F	Woodland South of Ringland Lane	C18	May	10	Woodland	2.70	41.10	54.60	0.00	0.50	1.10	0.00	0.00	0.10	1.50	0.30	101.90



F	Woodland South of Ringland Lane	C18	June	10	Woodland	3.70	14.40	27.50	0.00	3.90	1.10	0.70	1.40	0.10	2.50	1.50	56.80
F	Woodland South of Ringland Lane	C18	July	10	Woodland	0.90	22.50	12.80	0.00	0.90	1.20	0.20	2.40	0.00	2.80	1.10	44.80
F	Woodland South of Ringland Lane	C18	August	10	Woodland	40.10	26.50	11.10	0.40	0.10	1.40	2.00	2.90	0.00	2.30	0.30	87.10
F	Woodland South of Ringland Lane	C18	September	9	Woodland	13.22	19.56	41.11	1.44	0.22	2.89	0.67	1.22	0.11	6.44	0.33	87.22
F	Woodland South of Ringland Lane	C54	May	5	Woodland	2.80	76.80	16.40	0.00	0.00	0.20	0.20	0.00	0.00	1.40	0.20	98.00
F	Woodland South of Ringland Lane	C54	June	5	Woodland	5.00	11.40	5.00	0.00	1.60	2.40	0.40	2.00	0.00	5.00	0.40	33.20
F	Woodland South of Ringland Lane	C54	July	5	Woodland	2.20	55.40	65.20	0.00	0.20	0.40	0.60	5.20	0.00	0.00	0.20	129.40
F	Woodland South of Ringland Lane	C54	August	5	Woodland	30.40	641.40	77.00	0.00	0.00	2.00	5.20	3.60	0.00	5.80	5.00	770.40
F	Woodland South of Ringland Lane	C54	September	5	Woodland	13.40	66.40	116.80	1.00	0.00	2.20	0.60	1.60	0.00	1.00	0.40	203.40
F	Woodland South of Ringland Lane	C55	May	5	Woodland	2.00	208.20	138.00	1.80	0.00	2.20	0.00	0.00	0.00	0.40	0.00	352.60



F	Woodland South of Ringland Lane	C55	June	5	Woodland	2.40	843.60	641.00	0.00	2.00	0.80	1.00	0.60	0.00	0.00	0.00	1491.40
F	Woodland South of Ringland Lane	C55	July	5	Woodland	0.20	93.00	106.60	0.00	0.00	0.00	1.20	0.00	0.00	0.60	1.20	202.80
F	Woodland South of Ringland Lane	C55	August	5	Woodland	8.60	73.80	315.20	17.00	0.00	5.00	0.00	0.00	0.00	0.80	1.60	422.00
F	Woodland South of Ringland Lane	C55	September	5	Woodland	11.80	1164.60	1016.80	6.40	0.00	5.80	0.20	0.40	0.00	1.20	0.20	2207.40
F	Woodland South of Ringland Lane	C59	July	5	Woodland	2.80	455.40	83.00	0.40	0.20	0.40	1.00	6.80	0.00	0.20	0.00	550.20
F	Woodland South of Ringland Lane	C59	August	5	Woodland	31.80	216.60	80.20	0.00	0.00	3.00	5.00	6.00	0.00	2.40	4.20	349.20
F	Woodland South of Ringland Lane	C59	September	5	Woodland	19.40	310.20	201.80	0.00	0.00	1.80	0.40	0.60	0.00	0.80	0.40	535.40
H	Hedgerows South of Weston Road	B8	May	5	Hedgerow	1.20	279.20	37.80	0.00	29.20	0.80	0.00	0.00	0.00	2.60	0.00	350.80
H	Hedgerows South of Weston Road	B8i	May	5	Hedgerow	18.20	82.20	16.00	0.20	1.20	0.80	0.00	2.20	0.20	11.00	0.00	132.00
H	Hedgerows South of Weston Road	B8i	June	5	Hedgerow	4.40	50.60	4.60	0.40	0.20	0.00	0.20	1.00	0.00	4.60	0.00	66.00



H	Hedgerows South of Weston Road	B8i	July	5	Hedgerow	4.40	115.20	14.40	0.20	0.40	0.20	0.20	0.60	0.00	4.20	0.00	139.80
H	Hedgerows South of Weston Road	B8i	August	5	Hedgerow	4.80	24.40	11.40	0.00	0.40	0.60	0.40	0.80	0.00	6.60	1.80	51.20
H	Hedgerows South of Weston Road	B8i	September	5	Hedgerow	0.20	4.80	3.20	0.00	0.00	0.00	0.00	0.00	0.00	1.00	0.00	9.20
H	Hedgerows South of Weston Road	B9	May	5	Hedgerow	0.00	26.80	4.20	0.00	1.20	0.00	0.00	0.00	0.00	0.00	0.00	32.20
H	Hedgerows South of Weston Road	B9	June	5	Hedgerow	0.00	56.80	14.40	0.00	11.40	0.20	0.00	0.00	0.40	0.00	0.00	83.20
H	Hedgerows South of Weston Road	B9	July	5	Hedgerow	0.00	50.80	161.80	0.00	0.00	0.20	0.40	1.40	0.00	0.60	0.00	215.20
H	Hedgerows South of Weston Road	B9	August	5	Hedgerow	0.80	13.20	2.00	0.00	0.00	1.20	0.00	1.80	0.00	0.20	0.20	19.40
H	Hedgerows South of Weston Road	B9	September	2	Hedgerow	4.63	11.00	3.00	0.25	0.00	0.75	0.00	0.50	0.00	8.63	0.13	28.88
H	Hedgerows South of Weston Road	C12	May	5	Hedgerow	0.60	72.80	1.60	0.00	1.20	0.00	0.00	0.00	0.00	0.00	0.00	76.20
H	Hedgerows South of Weston Road	C12	June	5	Hedgerow	1.80	119.00	9.60	0.00	34.20	0.40	0.20	0.80	0.40	0.40	0.00	166.80



H	Hedgerows South of Weston Road	C12	July	5	Hedgerow	0.00	88.80	3.40	0.00	18.00	0.20	0.00	1.40	0.40	0.40	0.00	112.60
H	Hedgerows South of Weston Road	C12	August	4	Hedgerow	1.00	25.50	3.75	0.00	0.00	1.00	0.00	1.00	0.00	0.75	0.75	33.75
H	Hedgerows South of Weston Road	C12	September	5	Hedgerow	2.00	28.00	4.00	0.00	0.00	0.40	0.00	1.00	0.20	0.80	0.20	36.60
H	Hedgerows South of Weston Road	C28	May	5	Hedgerow	4.00	54.00	24.00	0.00	0.00	0.00	1.00	0.00	0.00	1.80	0.40	85.20
H	Hedgerows South of Weston Road	C28	June	5	Hedgerow	2.60	75.80	23.80	0.00	0.00	0.40	0.00	0.20	0.00	0.40	0.00	103.20
H	Hedgerows South of Weston Road	C28	July	5	Hedgerow	0.20	165.60	11.20	0.00	0.00	0.20	0.60	0.80	0.00	0.60	0.40	179.60
H	Hedgerows South of Weston Road	C28	August	5	Hedgerow	8.40	19.60	5.40	0.00	0.00	0.40	0.00	0.40	0.20	1.00	0.60	36.00
H	Hedgerows South of Weston Road	C28	September	5	Hedgerow	4.80	24.00	23.60	0.00	0.20	0.60	0.60	0.60	0.00	4.00	0.00	58.40
H	Hedgerows South of Weston Road	C34	June	5	Hedgerow	0.20	1.40	0.00	0.00	0.00	0.00	0.00	2.80	0.20	1.20	0.00	5.80
H	Hedgerows South of Weston Road	C34	July	5	Hedgerow	0.00	1.80	0.20	0.00	0.00	0.20	0.00	0.00	0.00	0.80	0.00	3.00



H	Hedgerows South of Weston Road	C34	August	5	Hedgerow	0.40	3.80	2.60	0.00	0.00	0.60	0.80	0.40	0.00	6.80	0.60	16.00
H	Hedgerows South of Weston Road	C34	September	5	Hedgerow	0.40	0.00	0.80	0.00	0.00	0.40	0.20	0.80	0.00	5.00	0.00	7.60
H	Hedgerows South of Weston Road	C81	May	5	Hedgerow	0.60	4.80	0.40	0.00	0.00	4.20	0.00	0.00	0.00	1.20	0.00	11.20
H	Hedgerows South of Weston Road	C81	June	5	Hedgerow	5.60	7.20	16.80	0.00	1.00	4.40	0.20	1.80	0.00	3.00	0.00	40.00
H	Hedgerows South of Weston Road	C81	July	5	Hedgerow	0.20	144.60	15.40	0.00	0.00	7.40	0.20	25.60	0.00	1.20	0.40	195.00
H	Hedgerows South of Weston Road	C81	August	5	Hedgerow	0.00	74.60	206.60	0.20	0.00	0.20	0.60	0.00	0.00	4.60	0.00	286.80
H	Hedgerows South of Weston Road	C81	September	5	Hedgerow	36.60	41.20	26.40	0.00	0.00	4.20	2.40	3.40	0.00	2.60	0.20	117.00
G	Hedgerows North of Weston Road	C11	May	5	Hedgerow	2.80	102.00	6.20	0.00	12.60	0.80	0.00	0.00	0.20	1.00	0.20	125.80
G	Hedgerows North of Weston Road	C11	June	5	Hedgerow	0.60	85.40	17.80	0.00	0.00	14.40	3.80	1.60	0.00	6.40	3.00	133.00
G	Hedgerows North of Weston Road	C11	July	5	Hedgerow	5.60	128.80	13.60	0.00	8.40	7.80	0.00	4.60	1.20	5.00	0.80	175.80



G	Hedgerows North of Weston Road	C11	August	5	Hedgerow	25.20	163.80	50.20	0.20	19.20	5.60	2.00	0.60	0.00	5.40	3.40	275.60
G	Hedgerows North of Weston Road	C11	September	5	Hedgerow	4.60	17.70	6.10	0.00	0.30	1.80	0.10	0.20	0.00	4.30	0.00	35.10
G	Hedgerows North of Weston Road	C33	May	5	Hedgerow	0.40	6.00	2.40	0.00	0.00	0.40	0.00	1.60	0.00	1.00	0.00	11.80
G	Hedgerows North of Weston Road	C33	June	5	Hedgerow	0.00	6.00	1.20	0.00	0.00	0.00	0.20	1.20	0.00	0.00	0.00	8.60
G	Hedgerows North of Weston Road	C33	July	5	Hedgerow	0.20	11.20	1.40	0.00	0.00	0.40	0.00	0.60	0.00	0.60	0.00	14.40
G	Hedgerows North of Weston Road	C33	August	5	Hedgerow	10.00	221.60	81.40	0.00	0.00	2.40	0.40	1.80	0.00	1.40	0.80	319.80
G	Hedgerows North of Weston Road	C33	September	5	Hedgerow	0.60	5.80	1.60	0.00	0.00	8.40	0.20	0.00	0.00	1.40	0.00	18.00
G	Hedgerows North of Weston Road	C35	May	5	Hedgerow	0.20	2.60	0.20	0.00	0.00	2.20	0.00	0.00	0.00	0.80	0.40	6.40
G	Hedgerows North of Weston Road	C35	June	5	Hedgerow	5.60	38.00	7.40	0.00	0.00	1.80	0.20	0.00	0.00	3.80	0.00	56.80
G	Hedgerows North of Weston Road	C35	July	5	Hedgerow	0.00	24.40	6.00	0.00	0.00	2.80	0.00	1.20	0.00	2.60	0.00	37.00



G	Hedgerows North of Weston Road	C35	August	5	Hedgerow	2.60	112.00	29.60	0.20	0.00	4.60	4.40	5.80	0.00	8.00	0.60	167.80
G	Hedgerows North of Weston Road	C35	September	5	Hedgerow	1.80	43.00	8.80	0.00	0.20	1.20	0.20	0.00	0.00	1.40	0.60	57.20
G	Hedgerows North of Weston Road	C56	May	5	Hedgerow	4.20	11.80	1.20	0.00	0.00	4.00	0.00	0.00	0.00	2.20	0.60	24.00
G	Hedgerows North of Weston Road	C56	June	5	Hedgerow	1.20	281.60	5.00	0.60	0.00	0.80	0.40	0.00	0.00	2.00	0.40	292.00
G	Hedgerows North of Weston Road	C56	July	5	Hedgerow	0.80	534.80	8.60	0.40	0.40	0.60	0.00	11.00	0.00	6.80	0.00	563.40
G	Hedgerows North of Weston Road	C56	August	5	Hedgerow	16.60	292.40	53.60	0.00	0.20	7.20	1.00	3.00	0.00	12.00	18.80	404.80
G	Hedgerows North of Weston Road	C56	September	5	Hedgerow	4.20	13.20	2.60	0.00	1.20	5.80	0.00	1.00	0.00	2.40	0.00	30.40
G	Hedgerows North of Weston Road	C78	May	5	Hedgerow	0.00	98.40	0.40	0.00	0.00	1.40	0.20	0.00	0.00	3.80	0.00	104.20
G	Hedgerows North of Weston Road	C78	June	5	Hedgerow	2.60	8.80	7.20	0.00	0.40	4.80	0.40	1.00	0.00	2.20	0.20	27.60
G	Hedgerows North of Weston Road	C78	July	5	Hedgerow	4.40	68.20	18.00	0.00	0.00	1.20	0.20	1.40	0.00	3.00	0.00	96.40



G	Hedgerows North of Weston Road	C78	August	5	Hedgerow	5.20	245.40	161.20	0.00	0.00	0.80	0.00	0.20	0.00	4.00	0.20	417.00
G	Hedgerows North of Weston Road	C78	September	5	Hedgerow	55.40	29.80	26.40	0.00	0.00	3.60	0.40	3.20	0.00	7.20	2.40	128.40
G	Hedgerows North of Weston Road	C79	May	5	Hedgerow	0.40	1.20	0.00	0.00	0.00	1.80	0.00	0.00	0.00	1.40	0.20	5.00
G	Hedgerows North of Weston Road	C79	June	5	Hedgerow	1.80	5.80	5.80	0.00	0.00	1.80	0.00	0.60	0.00	2.80	0.00	18.60
G	Hedgerows North of Weston Road	C79	July	5	Hedgerow	0.20	18.80	19.00	0.00	0.00	0.20	0.00	1.40	0.00	4.60	0.20	44.40
G	Hedgerows North of Weston Road	C79	August	5	Hedgerow	0.60	20.20	3.00	0.00	0.00	0.00	0.00	0.20	0.00	0.40	0.00	24.40
G	Hedgerows North of Weston Road	C79	September	5	Hedgerow	6.20	6.60	4.00	0.20	0.00	2.60	0.20	1.00	0.00	4.80	0.00	25.60
G	Hedgerows North of Weston Road	C80	May	5	Hedgerow	0.60	29.60	1.00	0.00	0.00	1.60	0.00	0.00	0.00	0.20	0.40	33.40
G	Hedgerows North of Weston Road	C80	June	5	Hedgerow	3.40	26.40	4.00	0.00	12.60	5.60	0.20	4.80	0.00	2.20	0.00	59.20
G	Hedgerows North of Weston Road	C80	July	5	Hedgerow	0.80	123.60	158.20	0.00	0.00	1.00	0.00	0.20	0.00	3.40	0.20	287.40



G	Hedgerows North of Weston Road	C80	August	5	Hedgerow	1.20	28.20	4.80	0.00	0.00	1.60	0.40	0.60	0.00	2.00	0.00	38.80
G	Hedgerows North of Weston Road	C80	September	5	Hedgerow	3.00	15.40	5.20	0.00	0.00	1.40	0.80	1.60	0.00	1.60	3.80	32.80
I	The Broadway	B10i	May	5	Woodland	0.00	342.80	251.40	0.00	0.00	9.20	0.00	0.00	0.00	0.00	0.20	603.60
I	The Broadway	B10i	June	5	Woodland	16.20	545.00	58.00	0.00	1.40	0.00	0.00	0.00	0.00	0.00	0.60	621.20
I	The Broadway	B10i	July	5	Woodland	11.20	699.40	172.60	0.00	4.40	1.00	0.40	1.60	0.20	2.00	1.20	894.00
I	The Broadway	B10i	August	5	Woodland	16.20	496.40	149.60	0.00	3.60	1.80	0.00	2.20	0.00	1.60	1.80	673.20
I	The Broadway	B10i	September	5	Woodland	16.00	138.20	100.60	4.20	0.60	1.40	0.40	1.60	0.00	0.80	1.20	265.00
I	The Broadway	C13	June	5	Woodland	1.00	111.40	8.40	0.00	3.80	1.20	0.00	2.00	0.20	1.80	0.40	130.20
I	The Broadway	C13i	May	5	Woodland	10.60	290.80	38.60	0.00	0.00	2.20	1.00	0.00	0.00	6.00	10.40	359.60
I	The Broadway	C13i	June	5	Woodland	11.80	686.00	90.40	0.00	3.00	2.00	0.00	0.00	0.00	2.80	1.40	797.40



I	The Broadway	C13i	July	5	Woodland	1.60	437.0 0	39.20	0.00	4.20	4.8 0	0.8 0	1.2 0	0.8 0	6.20	0.60	496.4 0
I	The Broadway	C13i	August	5	Woodland	5.00	297.2 0	112.6 0	0.00	0.80	2.0 0	3.4 0	18. 40	1.6 0	2.40	5.00	448.4 0
I	The Broadway	C13i	September	5	Woodland	9.80	417.4 0	44.40	0.00	0.40	0.8 0	0.0 0	0.4 0	0.0 0	3.80	0.40	477.4 0
I	The Broadway	C20	June	5	Woodland	1.40	369.6 0	77.60	0.00	2.80	0.2 0	0.0 0	0.2 0	0.0 0	0.20	0.20	452.2 0
I	The Broadway	C20	July	5	Woodland	4.00	252.2 0	46.00	0.00	1.40	1.0 0	0.8 0	10. 00	0.6 0	7.00	3.00	326.0 0
I	The Broadway	C20	August	5	Woodland	21.0 0	180.6 0	234.6 0	0.00	0.40	3.8 0	4.4 0	33. 40	5.2 0	3.00	20.0 0	506.4 0
I	The Broadway	C20	September	5	Woodland	5.20	654.8 0	452.6 0	0.00	1.20	1.4 0	0.4 0	2.2 0	0.0 0	2.20	1.00	1121. 00
I	The Broadway	C21	May	5	Woodland	3.60	200.4 0	30.60	0.20	0.00	0.2 0	0.4 0	0.4 0	0.0 0	0.80	0.20	236.8 0
I	The Broadway	C21	June	5	Woodland	15.8 0	331.4 0	208.4 0	0.00	0.20	0.4 0	0.0 0	0.2 0	0.0 0	0.20	0.40	557.0 0
I	The Broadway	C21	July	5	Woodland	6.60	358.2 0	39.60	0.40	0.00	0.6 0	0.2 0	0.0 0	0.0 0	0.60	1.20	407.4 0



I	The Broadway	C21	August	5	Woodland	21.20	187.40	278.00	0.00	0.60	3.00	2.00	19.80	17.80	0.40	20.40	550.60
I	The Broadway	C21	September	5	Woodland	15.20	625.40	263.80	0.00	0.60	2.00	0.00	1.60	0.20	0.40	0.60	909.80
I	The Broadway	C22	June	5	Woodland	2.00	46.20	24.40	0.00	5.00	1.80	0.00	0.00	0.00	0.20	0.00	79.60
I	The Broadway	C22	July	5	Woodland	1.80	65.60	15.60	0.00	0.60	0.00	0.20	1.40	2.20	0.40	2.20	90.00
I	The Broadway	C22	August	5	Woodland	7.60	100.00	124.20	0.00	0.00	2.80	1.20	6.20	4.20	0.20	8.00	254.40
I	The Broadway	C22	September	5	Woodland	1.00	47.00	54.60	0.00	0.00	0.60	0.00	0.40	1.20	2.00	0.20	107.00
J	Foxburrow Plantation	B11i	May	5	Woodland	3.80	200.80	30.20	0.00	0.00	0.20	0.00	0.00	0.20	1.00	0.80	237.00
J	Foxburrow Plantation	B11i	June	5	Woodland	9.60	144.60	112.20	0.00	8.20	9.20	0.00	1.40	0.20	4.80	0.60	290.80
J	Foxburrow Plantation	B11i	July	5	Woodland	4.80	250.40	170.60	0.00	3.40	3.20	0.80	16.20	2.20	2.20	3.40	457.20
J	Foxburrow Plantation	B11i	August	5	Woodland	20.60	675.60	605.00	0.00	14.20	8.80	17.00	54.40	16.00	127.00	13.80	1552.40



J	Foxburrow Plantation	B11i	September	5	Woodland	9.80	384.80	120.40	0.00	0.40	3.20	14.00	8.00	0.00	2.20	10.00	552.80
J	Foxburrow Plantation	B11ii	June	5	Woodland	2.80	137.20	175.00	0.00	2.60	3.00	0.00	0.80	0.20	3.00	0.20	324.80
J	Foxburrow Plantation	B11ii	July	5	Woodland	2.20	69.40	21.20	0.00	0.60	1.20	0.00	7.60	0.80	0.40	1.20	104.60
J	Foxburrow Plantation	B11ii	August	5	Woodland	4.60	347.60	47.00	0.00	0.60	2.40	1.40	6.80	2.60	1.80	10.00	424.80
J	Foxburrow Plantation	B11ii	September	5	Woodland	1.00	805.80	477.40	0.00	0.80	2.20	1.60	5.20	1.20	2.00	9.00	1306.20
J	Foxburrow Plantation	C14	June	5	Woodland	0.60	154.60	39.20	0.00	1.00	5.00	0.00	1.40	0.20	2.80	0.40	205.20
J	Foxburrow Plantation	C14i	June	5	Woodland	7.80	164.80	48.60	0.00	1.20	14.80	0.00	1.20	0.00	0.40	0.20	239.00
J	Foxburrow Plantation	C14i	July	5	Woodland	5.20	1278.00	313.40	0.00	0.20	13.60	0.80	19.00	1.40	0.60	0.40	1632.60
J	Foxburrow Plantation	C14i	August	5	Woodland	3.20	1440.20	544.60	0.00	0.20	1.40	3.20	9.00	0.60	0.40	4.40	2007.20
J	Foxburrow Plantation	C14ii	May	5	Woodland	0.00	81.60	77.00	0.60	0.20	6.60	0.40	0.40	0.00	0.40	0.20	167.40



J	Foxburrow Plantation	C14ii	June	5	Woodland	1.80	159.40	116.60	0.00	8.40	1.00	0.20	0.80	0.20	0.60	0.20	289.20
J	Foxburrow Plantation	C14ii	July	2	Woodland	3.00	640.00	57.00	0.00	2.00	3.00	5.00	2.50	0.00	1.00	0.00	713.50
J	Foxburrow Plantation	C14ii	August	5	Woodland	8.20	389.40	182.20	0.00	0.60	3.40	0.40	89.80	0.80	4.00	2.40	681.20
J	Foxburrow Plantation	C14ii	September	3	Woodland	3.67	229.67	206.67	0.00	0.33	0.33	2.00	16.33	1.00	3.00	4.33	467.33
J	Foxburrow Plantation	C15	June	5	Woodland	12.00	732.40	675.00	0.00	52.20	17.40	0.00	0.20	0.60	6.00	1.00	1496.80
J	Foxburrow Plantation	C15i	June	5	Woodland	25.80	398.20	423.40	0.00	4.80	1.80	0.00	0.00	0.20	0.40	0.40	855.00
J	Foxburrow Plantation	C15i	July	2	Woodland	5.00	2007.00	777.00	0.00	6.00	6.50	0.50	33.00	3.00	6.50	6.00	2850.50
J	Foxburrow Plantation	C15i	August	5	Woodland	5.00	726.80	715.20	0.00	2.20	0.80	0.60	1.80	0.20	1.40	4.00	1458.00
J	Foxburrow Plantation	C15i	September	4	Woodland	2.75	911.50	903.50	0.00	0.50	2.00	0.50	0.75	0.00	5.50	6.50	1833.50
J	Foxburrow Plantation	C23	May	5	Woodland	1.00	39.20	18.80	0.00	0.00	1.00	0.40	0.80	0.00	0.40	0.00	61.60



J	Foxburrow Plantation	C23	June	5	Woodland	4.40	76.60	45.40	0.00	0.20	7.00	0.20	1.20	0.20	1.20	0.00	136.40
J	Foxburrow Plantation	C23	July	5	Woodland	13.20	1504.40	941.40	0.00	3.20	33.00	8.20	36.20	11.80	3.40	7.80	2562.60
J	Foxburrow Plantation	C23	August	5	Woodland	2.80	236.40	310.20	0.00	3.80	5.80	2.20	7.00	11.60	5.80	7.20	592.80
J	Foxburrow Plantation	C23	September	5	Woodland	0.80	793.00	838.40	0.00	2.80	3.60	0.00	2.60	0.00	3.80	0.20	1645.20
J	Foxburrow Plantation	C24	May	5	Woodland	1.20	457.60	119.20	0.00	0.80	3.60	0.00	0.20	0.00	0.00	0.20	582.80
J	Foxburrow Plantation	C24	June	5	Woodland	0.80	67.00	46.20	0.00	3.20	1.60	0.00	0.20	0.00	1.40	0.20	120.60
J	Foxburrow Plantation	C24	July	5	Woodland	4.00	49.60	32.40	0.00	1.20	4.80	1.60	10.00	2.00	2.60	2.20	110.40
J	Foxburrow Plantation	C24	August	5	Woodland	1.60	222.60	138.80	0.00	2.60	2.40	0.80	91.60	1.20	0.40	11.40	473.40
J	Foxburrow Plantation	C24	September	5	Woodland	2.40	91.80	28.40	0.00	0.20	1.60	3.80	8.60	0.00	3.20	0.80	140.80
J	Foxburrow Plantation	C32	May	5	Woodland	0.60	30.40	12.60	0.00	0.20	1.20	0.00	0.00	0.00	0.00	0.20	45.20



J	Foxburrow Plantation	C32	June	5	Woodland	0.20	76.60	104.00	0.00	0.20	1.40	0.40	0.80	0.00	0.20	0.60	184.40
J	Foxburrow Plantation	C32	July	5	Woodland	1.00	45.40	34.40	0.60	0.00	0.80	0.00	2.00	0.00	0.80	0.00	85.00
J	Foxburrow Plantation	C32	August	5	Woodland	7.60	113.80	34.20	0.00	0.00	5.00	36.80	20.20	0.00	3.40	29.20	250.20
J	Foxburrow Plantation	C32	September	5	Woodland	1.00	53.40	18.60	0.20	0.20	0.60	4.00	5.40	0.00	0.00	0.20	83.60
J	Foxburrow Plantation	C41	May	5	Woodland	42.40	1273.80	497.40	0.20	0.20	23.60	4.40	0.00	0.00	5.40	4.00	1851.40
J	Foxburrow Plantation	C41	June	5	Woodland	60.00	1003.00	192.60	3.00	0.00	5.40	0.40	0.20	0.00	3.00	1.20	1268.80
J	Foxburrow Plantation	C41	July	5	Woodland	11.80	699.40	286.40	4.00	0.60	5.40	0.80	0.00	0.00	1.20	0.80	1010.40
J	Foxburrow Plantation	C41	August	5	Woodland	32.00	1228.20	472.80	0.20	0.40	8.80	23.20	1.20	0.00	8.20	10.00	1785.00
J	Foxburrow Plantation	C41	September	5	Woodland	5.60	921.60	599.80	0.20	0.00	5.60	20.80	6.00	0.00	3.60	24.80	1588.00
J	Foxburrow Plantation	C42	May	5	Woodland	0.40	777.00	403.00	0.00	0.00	2.40	0.20	0.00	0.00	0.60	0.00	1183.60



J	Foxburrow Plantation	C42	June	5	Woodland	30.8 0	989.2 0	811.0 0	0.00	3.80	6.6 0	1.0 0	0.0 0	0.4 0	1.20	3.60	1847. 60
J	Foxburrow Plantation	C42	July	5	Woodland	19.4 0	677.6 0	272.0 0	0.80	0.40	1.8 0	0.4 0	0.2 0	0.0 0	0.60	0.40	973.6 0
J	Foxburrow Plantation	C42	August	5	Woodland	10.6 0	952.0 0	583.0 0	17.2 0	0.00	25. 20	17. 00	5.8 0	0.0 0	10.2 0	14.0 0	1635. 00
J	Foxburrow Plantation	C42	September	5	Woodland	6.60	748.4 0	626.0 0	0.00	0.00	6.6 0	2.6 0	2.0 0	0.0 0	3.20	27.6 0	1423. 00
K	Hedgerows South of Foxburrow	C25	May	5	Hedgerow	1.00	22.00	4.20	0.00	0.00	0.2 0	0.4 0	0.2 0	0.0 0	0.20	0.00	28.20
K	Hedgerows South of Foxburrow	C25	June	4	Hedgerow	0.00	392.0 0	240.7 5	0.00	0.00	1.0 0	0.2 5	4.5 0	0.0 0	0.00	0.00	638.5 0
K	Hedgerows South of Foxburrow	C25	July	5	Hedgerow	0.40	49.80	10.40	0.00	0.60	0.4 0	0.0 0	4.2 0	1.4 0	0.60	0.20	68.00
K	Hedgerows South of Foxburrow	C25	August	5	Hedgerow	2.40	178.8 0	67.20	0.00	0.00	1.0 0	0.8 0	1.6 0	0.0 0	1.20	1.60	254.6 0
K	Hedgerows South of Foxburrow	C25	September	5	Hedgerow	0.20	8.40	5.40	0.00	0.20	1.0 0	0.0 0	3.0 0	0.4 0	1.00	0.00	19.60
K	Hedgerows South of Foxburrow	C26	June	4	Hedgerow	0.00	97.00	12.25	0.00	10.25	0.2 5	0.0 0	1.0 0	0.0 0	0.25	0.00	121.0 0



K	Hedgerows South of Foxburrow	C26	July	5	Hedgerow	0.40	11.20	3.80	0.00	0.00	0.00	1.60	1.80	0.00	0.80	0.20	19.80
K	Hedgerows South of Foxburrow	C26	August	5	Hedgerow	0.80	14.20	13.80	0.00	0.00	2.40	0.20	0.20	0.00	0.80	0.60	33.00
K	Hedgerows South of Foxburrow	C26	September	5	Hedgerow	1.00	8.00	4.40	0.00	0.00	1.60	0.00	3.20	1.20	1.60	0.80	21.80
K	Hedgerows South of Foxburrow	C29	May	5	Hedgerow	9.60	682.80	133.00	0.00	1.60	1.00	5.80	0.60	0.00	1.20	2.40	838.00
K	Hedgerows South of Foxburrow	C29	June	5	Hedgerow	2.60	57.60	27.00	0.00	0.00	0.00	0.00	0.60	0.00	1.60	0.00	89.40
K	Hedgerows South of Foxburrow	C29	July	5	Hedgerow	0.60	38.00	9.20	0.00	0.00	0.00	2.00	4.40	0.00	0.60	0.00	54.80
K	Hedgerows South of Foxburrow	C29	August	5	Hedgerow	2.80	26.00	18.20	0.00	0.20	13.20	0.20	4.20	0.00	0.80	0.60	66.20
K	Hedgerows South of Foxburrow	C29	September	5	Hedgerow	3.00	21.00	23.20	0.00	0.00	1.40	0.00	3.60	0.00	1.80	0.60	54.60
K	Hedgerows South of Foxburrow	C31	May	5	Hedgerow	0.00	5.80	1.20	0.00	0.20	0.80	0.00	0.20	0.00	0.80	0.00	9.00
K	Hedgerows South of Foxburrow	C31	June	5	Hedgerow	1.60	43.80	13.40	0.00	1.40	0.00	0.00	0.60	0.00	0.20	0.00	61.00



K	Hedgerows South of Foxburrow	C31	July	5	Hedgerow	1.40	23.60	7.00	0.80	0.00	0.80	0.00	1.60	0.00	11.80	0.20	47.20
K	Hedgerows South of Foxburrow	C31	August	5	Hedgerow	1.60	35.80	25.00	0.00	0.00	1.00	5.20	5.80	0.00	2.40	1.00	77.80
K	Hedgerows South of Foxburrow	C31	September	5	Hedgerow	1.20	46.60	8.60	0.00	0.40	1.00	0.80	6.60	0.00	2.20	0.40	67.80
K	Hedgerows South of Foxburrow	C40	May	5	Hedgerow	0.00	12.60	2.40	0.00	0.40	0.20	0.00	0.00	0.00	0.00	0.00	15.60
K	Hedgerows South of Foxburrow	C40	June	5	Hedgerow	0.80	54.40	9.40	0.00	1.80	0.20	0.20	0.00	0.00	0.40	0.20	67.40
K	Hedgerows South of Foxburrow	C40	July	5	Hedgerow	2.80	99.20	9.40	0.40	0.00	0.40	0.00	0.00	0.00	1.40	0.00	113.60
K	Hedgerows South of Foxburrow	C40	August	5	Hedgerow	1.20	107.60	54.00	0.00	0.00	1.40	2.20	8.40	0.00	2.40	0.20	177.40
K	Hedgerows South of Foxburrow	C40	September	5	Hedgerow	2.80	22.80	5.20	0.00	0.00	0.80	0.20	0.40	0.00	1.60	0.00	33.80
L	Control	R1	May	5	Hedgerow	0.40	14.80	7.40	0.00	0.00	2.20	0.00	0.00	0.00	1.20	0.00	26.00
L	Control	R1	June	5	Hedgerow	10.00	142.80	20.20	0.00	0.00	0.80	1.80	3.20	0.00	3.40	0.20	182.40



L	Control	R1	July	5	Hedgerow	8.40	104.8 0	32.20	0.00	0.00	1.0 0	0.2 0	1.0 0	0.0 0	4.20	0.00	151.8 0
L	Control	R1	August	5	Hedgerow	47.2 0	423.8 0	34.00	1.80	0.00	7.6 0	1.8 0	3.6 0	0.0 0	7.60	5.60	533.0 0
L	Control	R1	September	5	Hedgerow	13.6 0	519.2 0	36.20	0.00	0.20	4.8 0	0.8 0	1.2 0	0.0 0	3.00	0.40	579.4 0
L	Control	R2	May	5	Woodland	0.20	404.2 0	140.8 0	1.60	0.00	24. 00	0.0 0	0.0 0	0.0 0	0.60	0.00	571.4 0
L	Control	R2	June	5	Woodland	0.60	12.80	133.8 0	5.60	0.00	3.0 0	0.0 0	0.2 0	0.0 0	2.20	0.00	158.2 0
L	Control	R2	July	5	Woodland	0.60	28.80	138.6 0	0.00	0.00	3.6 0	0.4 0	0.4 0	0.0 0	0.20	0.40	173.0 0
L	Control	R2	August	5	Woodland	0.60	187.8 0	252.4 0	1.80	0.00	1.8 0	0.8 0	0.0 0	0.0 0	0.20	0.00	445.4 0
L	Control	R2	September	5	Woodland	0.80	5.00	94.20	5.60	0.00	3.8 0	0.0 0	1.6 0	0.0 0	0.60	0.20	111.8 0
L	Control	R3	May	5	Woodland	0.00	2.60	0.60	0.00	0.00	0.0 0	0.0 0	0.0 0	0.0 0	0.40	0.00	3.60
L	Control	R3	June	5	Woodland	0.20	7.00	0.80	0.20	0.00	0.8 0	0.0 0	1.2 0	0.0 0	2.20	0.00	12.40



L	Control	R3	July	5	Woodland	0.00	9.20	4.80	0.00	0.00	2.40	0.40	2.00	0.00	1.80	2.40	23.00
L	Control	R3	August	5	Woodland	0.40	49.20	6.40	0.00	0.00	4.20	0.00	2.40	0.00	4.00	0.00	66.60
L	Control	R3	September	5	Woodland	0.00	56.40	5.40	0.20	0.00	6.80	0.40	0.60	0.00	1.00	1.40	72.20
L	Control	R4	May	5	Woodland	2.00	10.60	11.80	0.00	0.20	1.40	0.00	0.20	0.00	0.80	0.60	27.60
L	Control	R4	June	5	Woodland	6.40	188.40	62.20	0.00	0.00	1.60	2.20	3.80	0.00	2.00	0.20	266.80
L	Control	R4	July	5	Woodland	3.80	139.20	108.80	0.00	0.00	1.60	2.60	7.60	0.00	1.60	0.80	266.00
L	Control	R4	August	5	Woodland	10.40	170.00	107.60	0.00	0.00	6.00	13.40	15.60	0.00	6.40	5.00	334.40
L	Control	R4	September	5	Woodland	3.40	300.60	80.60	0.60	1.00	3.60	5.80	4.40	0.00	2.00	128.80	530.80
L	Control	R5	May	5	Woodland	0.00	342.80	251.40	0.00	0.00	9.20	0.00	0.00	0.00	0.00	0.20	603.60
L	Control	R5	June	5	Woodland	0.20	763.60	759.20	0.00	0.20	9.40	2.20	1.00	0.00	4.40	1.80	1542.00



L	Control	R5	July	5	Woodland	0.00	456.20	696.20	0.00	0.00	7.60	1.00	0.20	0.00	1.80	0.20	1163.20
L	Control	R5	August	5	Woodland	2.40	476.80	708.40	1.40	0.00	27.40	1.40	1.40	0.00	4.60	50.20	1274.00
L	Control	R5	September	5	Woodland	1.40	1161.60	1016.60	7.80	1.40	9.80	0.40	0.60	0.00	3.60	0.60	2203.80
L	Control	R6	June	5	Woodland	29.60	38.80	8.20	0.40	0.00	2.00	2.40	2.60	0.00	0.60	0.40	85.00
L	Control	R6	July	5	Woodland	1.40	152.00	77.80	0.00	1.80	0.80	0.60	4.40	0.00	1.60	1.60	242.00
L	Control	R6	August	5	Woodland	0.40	43.80	15.80	0.00	0.00	1.80	1.20	1.40	0.00	1.20	1.00	66.60
L	Control	R6	September	5	Woodland	3.80	33.20	21.60	1.00	0.00	2.40	4.20	2.80	0.00	1.20	3.40	73.60
L	Control	R7	May	5	Woodland	0.00	342.80	251.40	0.00	0.00	9.20	0.00	0.00	0.00	0.00	0.20	603.60
L	Control	R7	June	5	Woodland	9.00	57.80	9.40	0.00	0.00	3.80	1.20	1.60	0.00	0.40	0.80	84.00
L	Control	R7	July	5	Woodland	0.60	105.20	7.40	0.00	0.00	0.80	0.60	1.20	0.00	0.60	0.00	116.40



L	Control	R7	August	5	Woodland	2.80	318.80	68.80	0.20	0.00	2.00	1.60	2.60	0.00	1.40	1.60	399.80
L	Control	R7	September	5	Woodland	3.00	12.00	31.20	1.00	0.60	3.60	2.20	7.00	0.00	4.20	1.60	66.40
M	Ungrouped	C19	May	5	Hedgerow	9.00	12.80	15.60	0.00	0.80	2.60	0.00	0.20	0.20	4.60	0.00	45.80
M	Ungrouped	C19	June	5	Hedgerow	0.40	6.60	8.00	0.00	0.00	0.20	0.00	0.00	0.00	1.00	0.20	16.40
M	Ungrouped	C19	July	5	Hedgerow	0.00	19.80	4.60	0.00	2.00	0.00	0.20	2.40	0.20	1.20	0.80	31.20
M	Ungrouped	C19	August	3	Hedgerow	32.33	10.00	6.00	0.00	0.00	1.33	0.00	0.67	0.00	1.00	0.00	51.33
M	Ungrouped	C19	September	4	Hedgerow	1.00	4.25	12.00	0.00	0.25	1.25	0.00	0.75	0.00	0.50	0.00	20.00
M	Ungrouped	C27	May	5	Hedgerow	0.60	35.20	7.80	0.40	2.80	2.00	0.00	1.00	0.40	0.60	0.00	50.80
M	Ungrouped	C27	June	5	Hedgerow	1.60	49.60	61.20	0.00	0.80	13.60	0.00	1.60	0.00	0.00	0.00	128.40
M	Ungrouped	C27	July	5	Hedgerow	0.40	53.00	15.00	0.00	0.00	1.00	0.40	2.80	0.20	0.60	0.60	74.00



M	Ungrouped	C27	August	5	Hedgerow	3.40	16.80	15.80	0.00	0.60	3.00	0.00	2.20	0.00	2.20	0.80	44.80
M	Ungrouped	C27	September	5	Hedgerow	0.60	8.00	9.00	0.00	0.00	0.40	0.00	0.40	0.00	1.60	0.00	20.00
M	Ungrouped	C76	May	5	Hedgerow	0.00	31.40	113.40	0.00	0.00	3.00	0.80	0.20	0.00	0.40	0.20	149.40
M	Ungrouped	C76	June	5	Hedgerow	1.00	6.20	20.60	0.00	0.00	10.00	0.60	38.60	0.00	3.80	0.40	81.20
M	Ungrouped	C76	July	5	Hedgerow	1.00	11.80	58.40	0.00	0.00	8.80	0.40	8.60	0.00	0.40	0.00	89.40
M	Ungrouped	C76	August	5	Hedgerow	2.40	100.80	135.60	0.00	0.00	5.60	10.80	18.00	0.20	3.80	0.60	277.80
M	Ungrouped	C76	September	5	Hedgerow	3.60	648.00	193.20	0.20	0.20	3.20	2.00	8.40	0.00	6.60	0.40	865.80
M	Ungrouped	C82	May	5	Hedgerow	10.40	48.60	58.00	0.20	0.00	15.80	0.20	1.00	0.00	1.40	0.00	135.60
M	Ungrouped	C82	June	5	Hedgerow	6.20	95.00	105.40	1.40	0.60	6.20	0.20	28.00	0.00	7.60	0.00	250.60
M	Ungrouped	C82	July	5	Hedgerow	8.00	92.80	242.80	0.00	0.00	6.60	11.40	58.60	0.00	8.00	0.00	428.20



M	Ungrouped	C82	August	5	Hedgerow	4.00	76.60	214.80	0.00	0.80	28.20	2.80	7.80	0.00	9.00	2.00	346.00
M	Ungrouped	C82	September	5	Hedgerow	13.80	80.20	155.00	4.60	0.60	19.80	2.60	6.00	0.00	22.80	8.40	313.80



Figure D-1 – Summer bat activity index values - barbastelle





Figure D-2 - Summer peak monthly activity - barbastelle





Figure D-3 - Summer bat activity index value - common pipistrelle

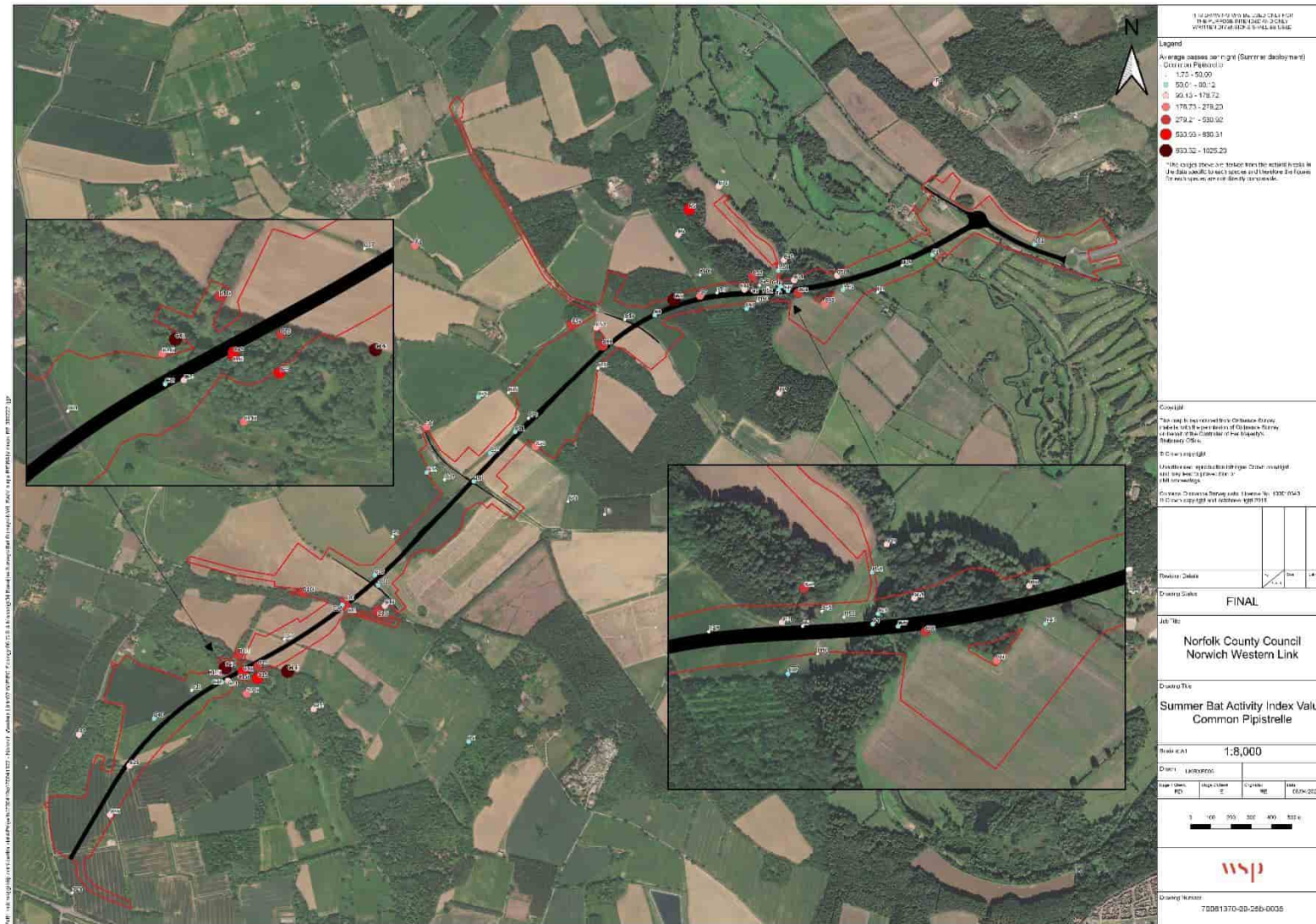


Figure D-4 - Summer peak monthly activity - common pipistrelle

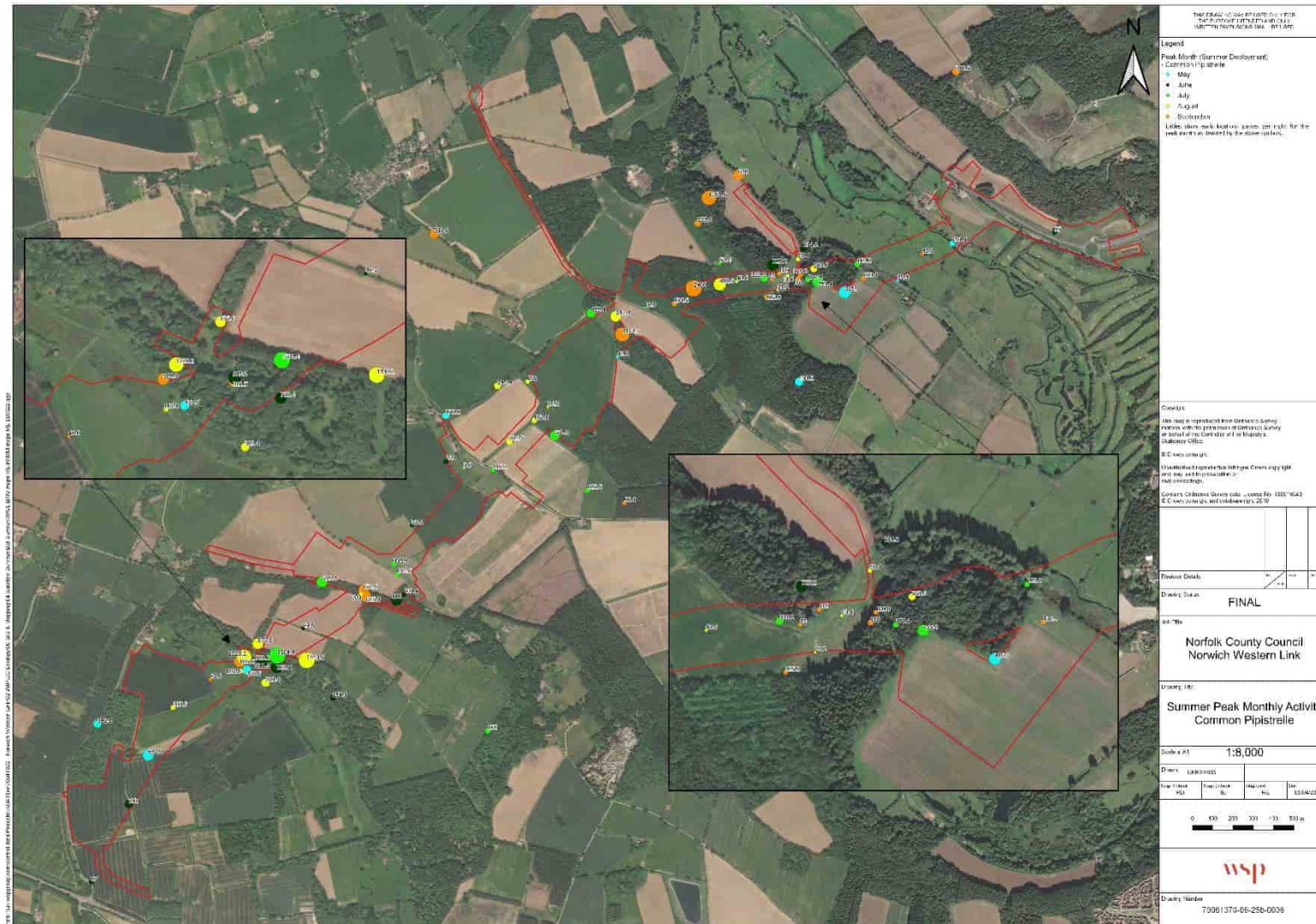


Figure D-5 - Summer bat activity index value – soprano pipistrelle





Figure D-6 - Summer peak monthly activity – soprano pipistrelle

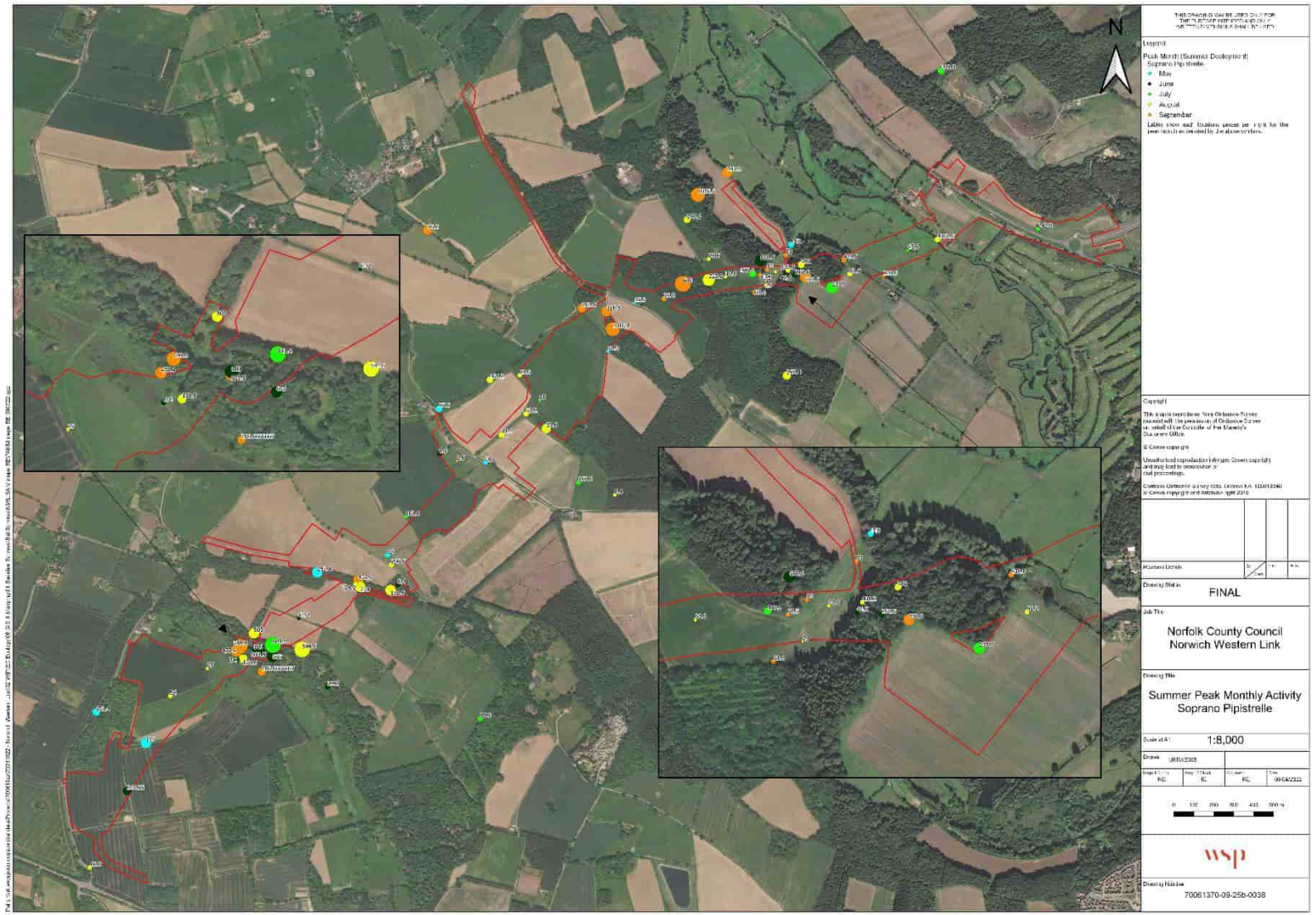




Figure D-7 - Summer bat activity index value – *Nathusius pipistrelle*





Figure D-8 - Summer bat activity index value - *Myotis* species

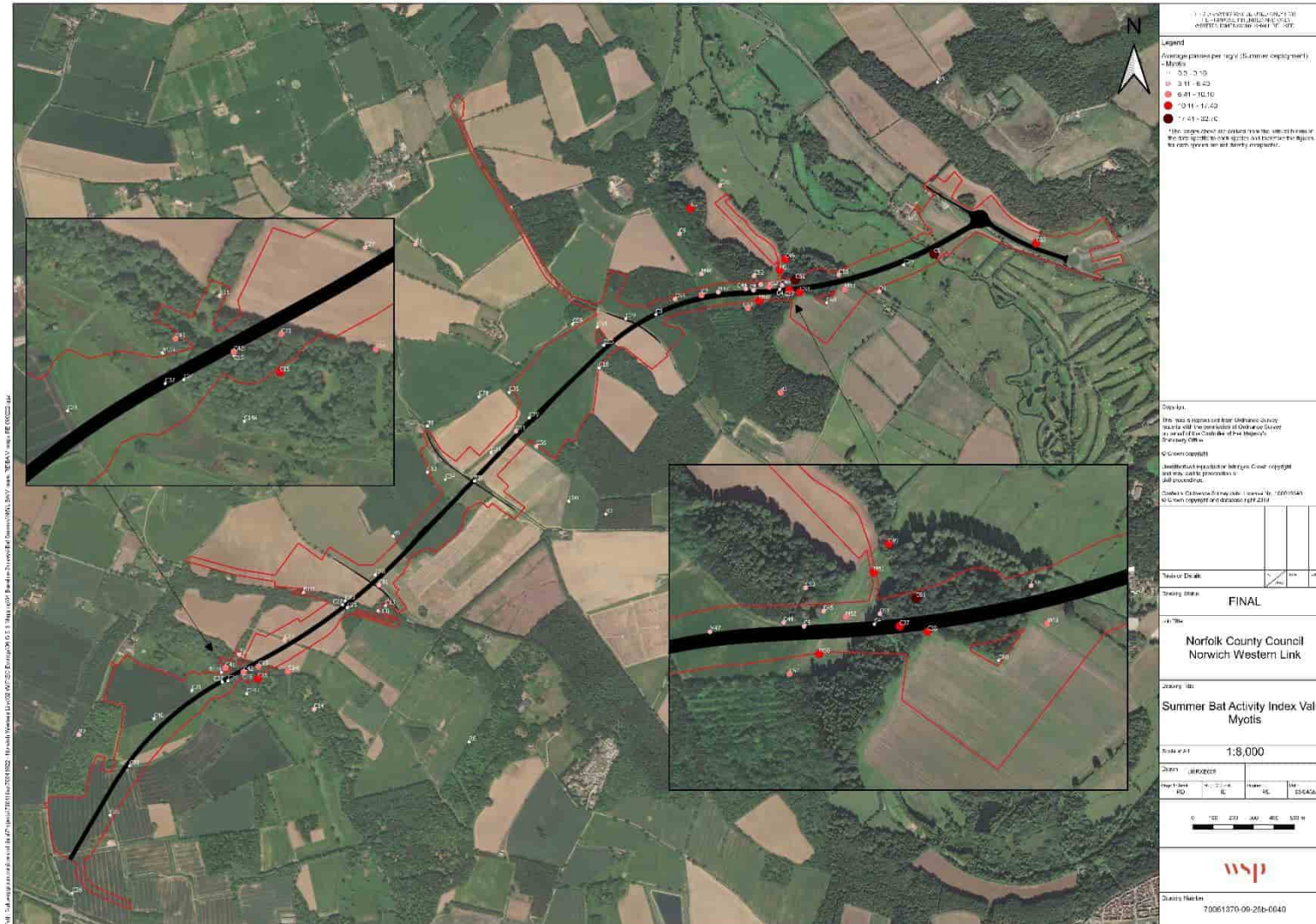




Figure D-9 - Summer peak monthly activity - *Myotis* species





Figure D-10 - Summer bat activity index value - *Nyctalus* species





Figure D-11 - Summer bat activity index value - brown long-eared bat





Figure D-12 - Summer peak monthly activity- brown long-eared bat





Figure D-13 - Summer bat activity index value - serotine

